

Banking online can save you time and money - let's explore some of the great features on ASB's FastNet Classic internet banking.

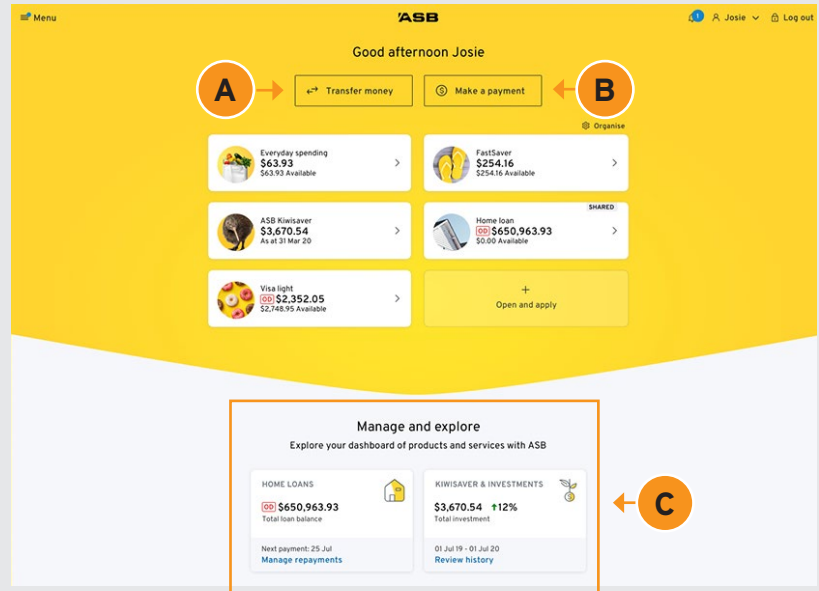
Accounts view and dashboard

The accounts view and dashboard are an easy way to get an overview of your products and services with ASB.

Everyday banking activities like **transferring money** **A** or **making payments** **B** are easily accessible from the top of the accounts page.

Discover detailed information by clicking on the account you wish to view.

If you have an ASB Home Loan, Investments, including the ASB KiwiSaver scheme or Insurance, you can **manage and explore** **C** these products via the dashboard.

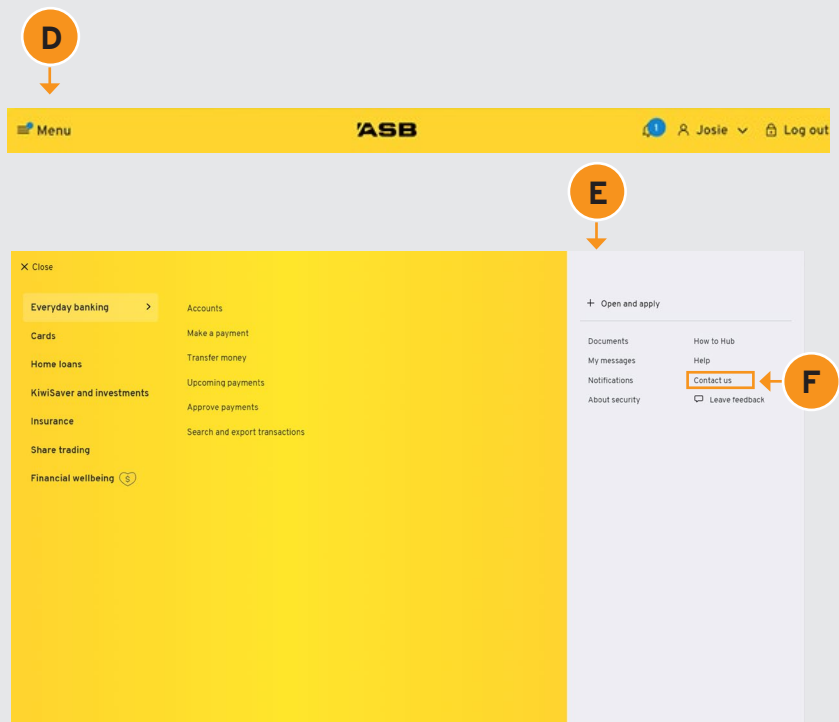


Menu

You'll find the **Menu** **D** in the top left-hand corner of the page.

Click here to navigate through the features of FastNet Classic internet banking. On the right-hand side **E**, you can access Documents, Notifications, Open and apply, Help content and a direct link to the How-to Hub. Here you will find more detailed instructions on how to complete banking actions and other online activities.

The **Contact Us** **F** option in the menu will give you access to the different ways you can get in touch, allowing you to choose your preferred method of communication.

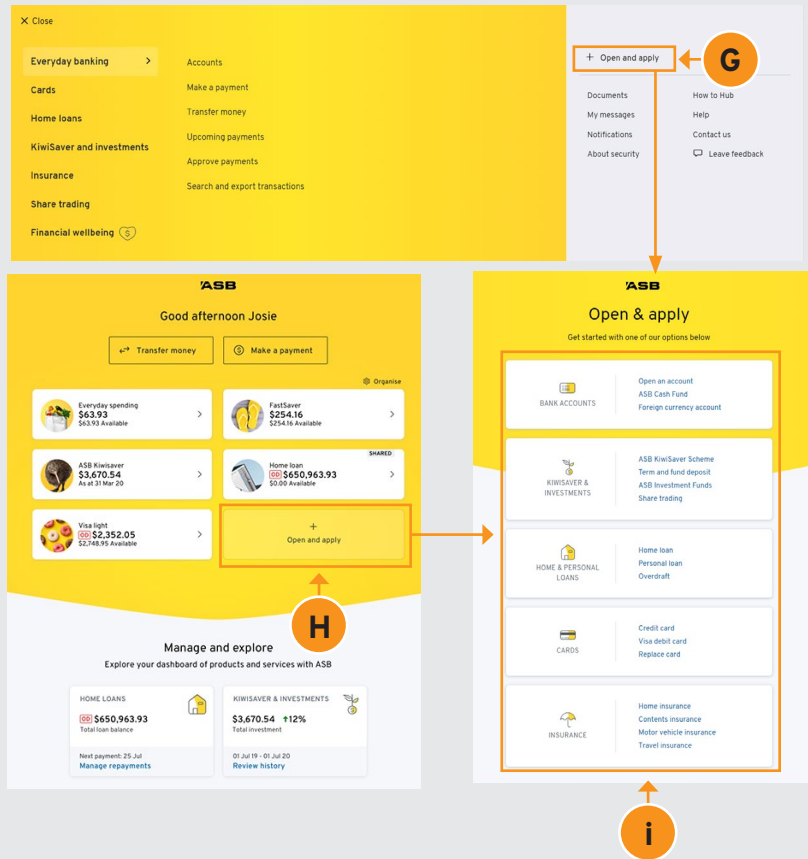


Open and Apply

If you are looking to open a new account, ASB KiwiSaver Scheme account or Term Deposit, you can do so here. Select **Open and apply** **G**.

You can also select **Open and Apply** **H** from the Accounts view.

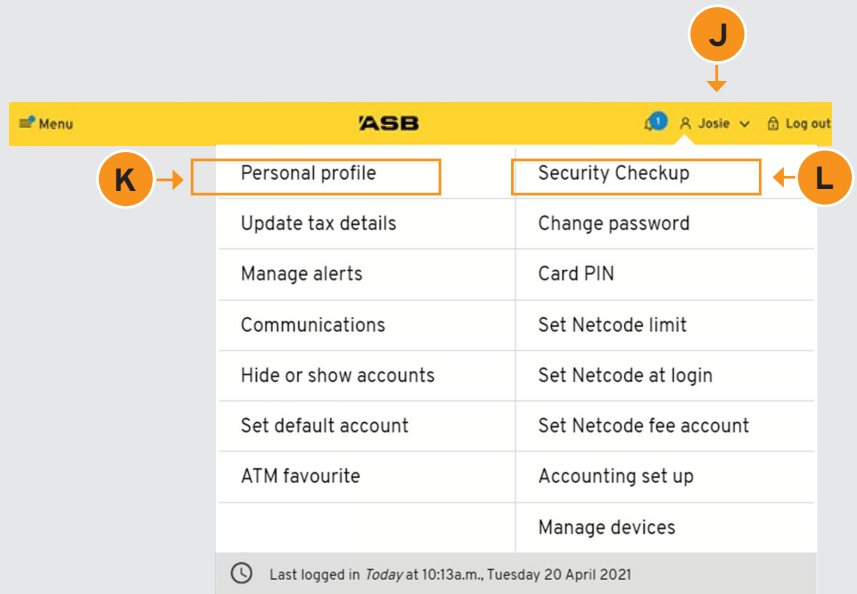
From here, you'll see the range of options you can open and apply for **i**.



Personal Settings

Your **personal settings menu** **J** can be found in the top right-hand corner of the accounts page.

Here you can update your details in your **Personal profile** **K**, explore security settings by doing the **Security Checkup** **L**, setting your security features, and more.



Notifications

Beside the personal settings menu you will find your **Notifications Bell** **M**. This is one of the ways ASB will get important information and alerts to you.

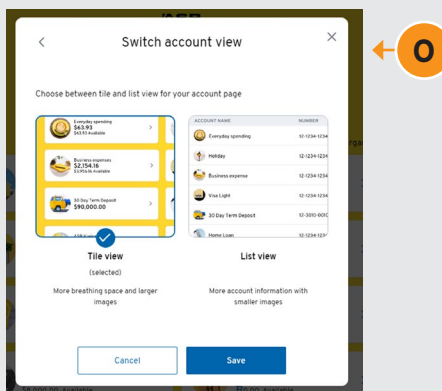
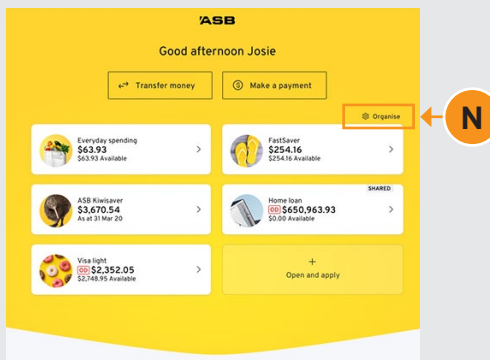


Continued on next page

Switch account view

From the main accounts page, you can click on **organise** **N** to arrange your accounts in the way you'd like to view them.

In **Switch account view** **O** you can choose to have more space, large images, or more information on your accounts.



Reorder and personalise accounts

You can select an account to personalise **P**. From here, you can select a name and even an image for your account **Q**.

You can also manage the order in which your accounts are displayed **R**. These changes will also be applied to your ASB Mobile Banking app.

